

Waltz #10

Waltz for Piano

Peter S. Quinn

Tempo = 165

F7

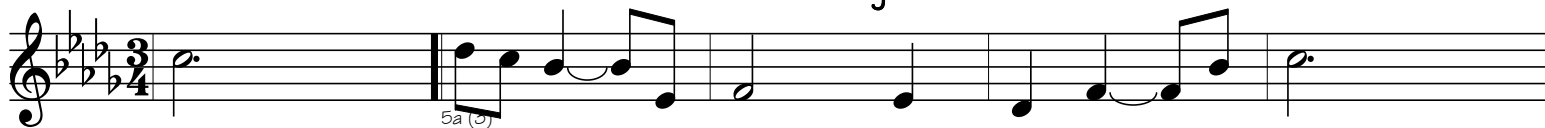
Bbm7

BbmMaj7

Bbm7

Gb9

F7

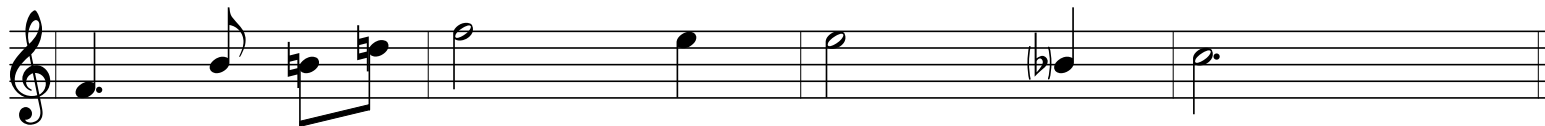


Bb7b9

Ebm7

Cm7b5

F7



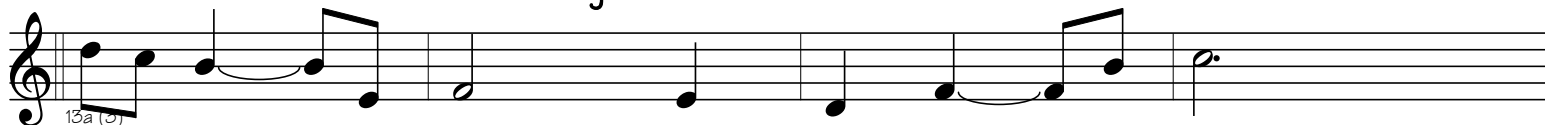
Bbm7

BbmMaj7

Bbm7

Gb9

F7

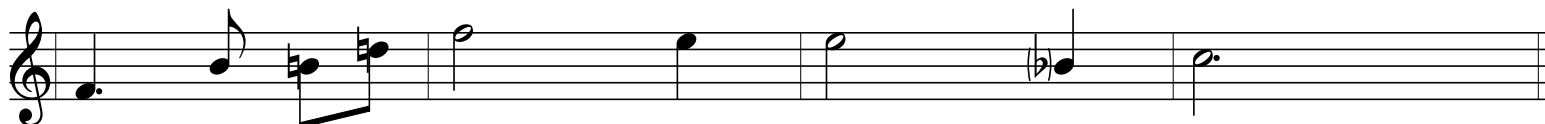


Bb7b9

Ebm7

Cm7b5

F7

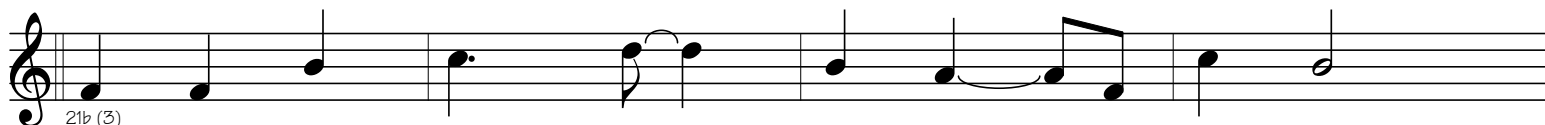


Gm7b5

C7

Fm7

Bb7



Ebm6

F7b9



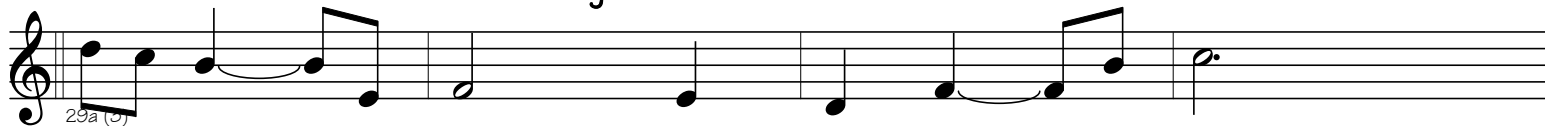
Bbm7

BbmMaj7

Bbm7

Gb9

F7

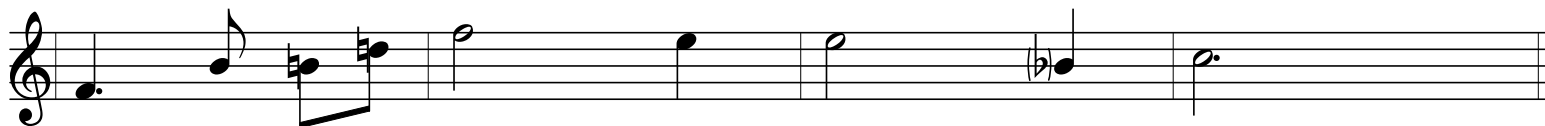


Bb7b9

Ebm7

Cm7b5

F7



Bbm

